

IN-LINE AIR FLOW REGULATORS

- Especially designed to control air pressure to air tools
- High volume air adjusting regulator
- Pressure Range 0-160 PSI



Model No.	Mfg. No.	Inlet NPT(M)"	Outlet NPT(F)"	Price /Each
TA838	62.105	1/4	1/4	

IN-LINE PRE-SET PRESSURE REGULATORS

- Ensure optimal air tool efficiency by supplying a constant pre-set pressure
- Limit over-consumption of compressed air, thereby reducing energy costs
- Blow guns in order to respect OSHA and other Safety Agencies' requirements (maximum pressure of 30 PSI)

Model No.	Mfg. No.	Pre-Set Pressure	Price/Each
TLZ013	62.202C	27	
TLZ014	62.210C	90	

TOPRING AIR ADJUSTING VALVES

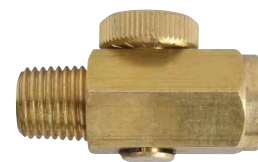


AIR ADJUSTING VALVES

- Permits accurate flow control in either direction
- Set knurled knob to desired flow rate
- Spring-loaded ratchet permit positive flow adjustment without drift
- Oil resistant seals prevent leakage

Warning: Do not use as a shut-off-valve

TOPRING



Model No.	Mfg. No.	Inlet (F) NPT"	Outlet (M) NPT"	Price /Each
TA837	62.101	1/4	1/4	

TOPRING MINI REGULATORS



MINI REGULATORS

- Specially designed for use with air tools for accurate pressure regulation
- Full diaphragm regulation for precise air pressure
- 3-position knob pushed to lock and can be removed for taper - resistance
- Push-pull lock setting to avoid unplanned readjustment
- Lightweight and compact
- Temp. Range: 40°F to 120°F
- Flow Cap.: Up to 14 SCFM
- Pressure PSI 2-125 PSI



Model No.	Mfg. No.	Port Size (M) NPT"	Pressure PSI	Price /Each
TA849	62.125C	1/4	0-165	
TA796	55.121		Replacement Gauge	

ANTI HOSE WHIP SAFETY VALVES

- Anti hose whip safety valve is an inline emergency shutoff valve
- Under failure conditions, the valve closes - the air is shut off
- Small amount of air continues to bleed after shut off at a rate of 9 SCFM.
- Automatically return to the normal position when pressure is re-established

OSHA standard no. 1926.302(b)(7): "All hoses exceeding 1/2" inside diameter shall have a safety device at the source of supply or branch line to reduce pressure in case of hose failure." Topring anti hose whip safety valves satisfy this standard.

Model No.	Mfg. No.	Inlet Size NPT	Outlet (F) NPT	Shutoff Range* (SCFM)	Total Length"	Price /Each
BB396	58.952	1/4 (M)	1/4	21	2 21/64	
BB398	58.957	3/8 (M)	3/8	42	2 3/4	
UQ888	58.962	1/2 (M)	1/2	99	3 7/64	
UQ889	58.967	3/4 (F)	3/4	125	2 63/64	

* Based on an inlet pressure of 90 PSI

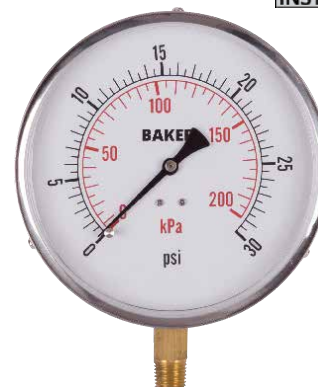
TOPRING



PRESSURE GAUGES

- Corrosion resistant stainless steel case and ring, plastic lens
- Balanced adjustable black pointer
- Soft soldered phosphor bronze tube with brass socket. Suitable for steam, water, air, oil, gas or any medium not corrosive to copper alloys
- Phosphor bronze movement is recommended for average general use
- Easy to read dial, white background with bold black numerals and graduations, 270° arc
- 1/4" NPT bottom connection only
- 1% accuracy

BAKER INSTRUMENTS



Model No.	Mfg. No.	Dial Ranges	Figure Intervals	Minor Div.	Price /Each
PRESSURE RANGES					
IA326	421AVND-30	0-30 PSI	5 PSI	0.5 PSI	
IA327	421AVND-60	0-60 PSI	10 PSI	1 PSI	
IA328	421AVND-100	0-100 PSI	10 PSI	1 PSI	
IA329	421AVND-160	0-160 PSI	20 PSI	2 PSI	
IA330	421AVND-200	0-200 PSI	20 PSI	2 PSI	
IA331	421AVND-300	0-300 PSI	50 PSI	5 PSI	
IA332	421AVND-500	0-500 PSI	50 PSI	5 PSI	
VACUUM RANGES					
IA333	421AVND-30VAC	30"-0 Hg Vac	5"	0.5"	